

REVERB

What's Inside... A closer look at the previous semester-Highlighting our recent achievements, our agendum and what we aspire towards.

Contents

02...
OUTSIDE the School
OPEN DAY

03...
Collaborative
Workshop
ANDC

04...
THESIS WORKS I

05...
THESIS WORKS II

06...
STUDENTS'
CORNER
BMSSA ISR

07...
SPECTRUM WEEK
BMSSA TRIVIA

08...
BMSSA TRAVELS



From the desk of
the Director
Dr. Sapna Papu

The release of the fourth issue of 'Reverb' marks the sixth year of inception of the School. While ensuring curricular conformity, we explore innovative 'Teaching-learning' approaches leading towards establishing an Identity to the school. The semester commenced with 'CONSTRUCTORIUM', a 'hands-on' activity across semesters, wherein, students explored and built experimental structures on campus. Further, the students are sensitized to 'creativity' through workshops by an eminent 'Artist in Residency'; introduced to the digital world through workshops by 'Autodesk'; dotted with interactions with the Industry



PRAJNA AIGAL
(Final Year Student, BMSSA) received the **B S Naraiyan Memorial Scholarship 2016-17** on August 23, 2016 from **Dr. Ragini Narayan**, the Donor Trustee, BMS Educational Trust.

VTU Ranks #1 & #9 BMS SA bags top honours

Congratulations are in order for **Ms. Sahana M Bhatt** and **Ms. Smrithi K** who have done their alma mater proud by securing respectively the FIRST and the NINTH rank in Bachelor of Architecture amongst all the colleges affiliated to Visveswarya Technological University. for the batch 2010-2015.

The BMS Educational Trust extends heartfelt appreciation for the perseverance and integrity shown by these students and wishes for their continued success in life. The Management and the Director also congratulates the entire family of BMS School of Architecture, Yelahanka on this **outstanding achievement of the very first graduating batch of the School.**

Ms. Sabana M Bhatt (L)- VTU Rank #1 and Ms. Smrithi K (R) - VTU Rank #9 for B.Arch (2010-15).



FDP 2016

Workshop by Prof Rabinra J Vasavada on Pedagogical Approaches in Architecture



To engage in dialogue over innovative pedagogical approaches BMSSA had organised a two-day Faculty Development Program by eminent architect and academician Prof. Rabinra J Vasavada on Aug 16-17, 2016. Insightful pedagogical discussions were conducted in separate sessions under various themes based on subject streams and integrative approach for each semester.



FAREWELL '11-'16

BMSSA bids adieu to the Second Batch



Eminent academicians Prof. R. J. Vasavada, and Prof. Durganand Balsavar presided over the farewell ceremony of the second batch 2011 - 2016, on Aug 15, 2016. It was an eventful affair with cultural performances, valedictorian speech from Ms Pooja Harumalani and other informal activities.



(far right)

Farewell Ceremony 2016

(right)

Faculty Interaction Sessions
with Prof. R J Vasavada

M.ARCH commences

Library is Online now

Awards Constituted

BMSSA Awards have been instituted to recognize and encourage outstanding student performance. They comprise of

1. Shri B S Narayan Memorial BMSSA Rolling Shield
2. Shri B M Srinivasaiah Memorial THESIS Gold Medal
3. BMS Educational Trust Best All-Round Performance Trophy

Also, the following recognitions would be given each academic year
 BMSSA Merit Certificates
 BMSSA Best Library User (BLU) Award



BMSSA OPEN DAY 2016

On March 19, 2016, the Second BMSSA OPEN DAY was organised when the students of BMSSA had an exhibition cum sale of their works. The event was held in conjunction with a Parent Teacher Interaction so as to make the guardians a part of this celebration of their wards' talents.

BMS SA presents
OPEN DAY
 MARCH 19TH, 2016 8:30 am to 12:00 pm

EXHIBITION CUM SALE OF STUDENTS' WORKS

All the students of BMS SA are hereby invited to exhibit their works for sale!

Contact your faculty coordinators, and confirm the space for you before **March 12TH**!!



FACULTY COORDINATORS

- | | | | |
|---|---|--|---|
| II Sem
Shreshth Goud
Kalyana Varadachari | IV Sem
Anjan Kumar
Shreshth DD | VI Sem
Shweta Gupta
MS Harsha | VIII Sem
Shreyasi Pal
Sharan Ghose |
|---|---|--|---|



M.Arch ADMISSION 2016-17

URBAN DESIGN

CONTACT

BMS School of Architecture
 Doddaballapur Main Road
 Avsahalli, Yelahanka
 Bangalore 560064

Tel : 080-28463208
 Mob : 9886610808
 Fax : 080-28463208

director@bmssa.ac.in

OUTSIDE THE SCHOOL

Ar. Shweta Gupta presented a paper entitled 'Ecology or the Human Mind - Where is Home?' at the 1st International Conference on Universal Human Values held at Baha'i Academy, Panchgani in June 2016.

Ar. Shreyasi Pal would be presenting a paper 'Politics of Urbanscape: Transfiguring the Image of Kolkata' at the International Symposium on Designing Urban Design: to be held at METU, Ankara, Turkey in Oct 2016.

Ar. Srushti Goud would be presenting a paper on Parametrizing Indian Karnata-Dravida Temple Using Geometry at International Conference of the Arab Society for Computer Aided Architectural Design 2016, organised at SOAS University of London in Nov 2016.

Engr. Gayathri S S and Engr. Pooja Malpani attended a Workshop on Pedagogy of Structures III, hosted by SJBIT in July, 2016. **BMSSA senior faculty Ar. Sharan, Desai, Ar. Seerupa Deb, Ar. Seema Naveen, Ar. Seema Anil and Ar. Sunil Reddy** attended a workshop on Management Capacity Development Program in BMSIT in June, 2016.

"Mysterious juncture"

by our resident artist **Chandan Kashyap S K** for "89th Annual all India art exhibition 2016", New Delhi by All India Art And Crafts Society, scheduled in Nov- Dec 2016



Photography Workshop

by **Ar. Keki Mistry**

Weekly Architectural Photography Workshop is being conducted at BMSSA for Sem III students. The introductory workshop was conducted before the students left for their architectural study trips to help them document.



Advertisement

IndigoInteractives is an initiative to explore education through travel and hands on experience. We firmly believe that experience based learning leads to a faster and deeper understanding. Our expert team of architects and educationalists can plan a program according to your brief.

We service to institutions, Offices and individuals who want to go beyond and explore the vast world of knowledge.

indigo
 interactives

Collaborative Studio

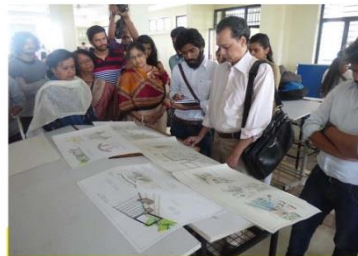
BMS School of Architecture, Yelahanka, Bangalore
D Y Patil College, Kolhapur

BMSSA has launched an initiative to nurture knowledge-sharing relationships with other Institutions to create a platform where students encounter new value systems in mutual exchange of ideas.

In **August 2016** a group of 80 third year students from **DY Patil College, Kolhapur** accompanied by two of their faculty, came to **BMSSA, Bangalore** for a collaborative workshop with our 80 students of Sem V. The faculty teams from both Institutions were in correspondence to discuss and formulate a mutually beneficial design exercise. On Aug 4, the entire group of 160 students was briefed about the design brief. In mixed groups which had students from both institutions, the design problem was solved as a time problem. Day 2 on Aug 5 started with a guest lecture of Ar. Vikram Yellure who presented his award-winning thesis. It was followed by a jury session of student works. Students from both institutions were enthusiastic about the exercise and the jurors were impressed with the efforts put in. The program ended with an address from the Director, Dr. Sapna Papu. The program was appreciated by students and faculty alike, of both the institutions and hopefully marks the beginning of a

Figures from top clockwise:

1. Student group Interaction Sessions
2. Dr. Sapna addressing the students after Ar Vikram Yellure's presentation
3. Ar Raghavendra and Ar Vikram Yellure adjudging the collaborative studio student works
4. Group Counselling Sessions
5. Guest lecture for Sem V students by Ar. Sudha



In-Campus Counsellor
BMSSA has commenced weekly counselling sessions for all the students by Ms Izzat Ansari. The sessions have been successful and unexpectedly well-received by the students.

Proud Sponsors of ANDC 2016

With Best Compliments from:

AD SPACE

History Excursion

History On-Site Belur Halebid

Sem II students, accompanied by their faculty Ar Srushti Goud and Ar. Seema Anil, undertook a sketching excursion of Belur and Halebid, Karnataka in April 2016.



BMSSA hosts ANDC 2016



NASA Activities

The jury for the **Annual Nasa Design Competition ANDC 2016** was hosted by BMS School of Architecture, Yelahanka, Bangalore. Spanning across 3 days, eminent educationists and practitioners reviewed the 460 entries for this year's competition. The jury generated heated debates and intense deliberations on all three days. The entire process was a learning process for the students who gained insights on the working of the best young designers and that of the eminent architects on the panel. The final day culminated in an interesting **Panel Discussion**, chaired by Ar. Soumitro Ghosh on current design challenges. The eminent architects who graced the occasion included:

NISHA MATHEW
VIJAY NARANAPATTI
SANJAY SRIDHAR
PRASHANTH POLE
CHITRA VISHWANATH
JEETH IYPE
SANDEEP SEN
PRASAD ROTTI
ARUN SWAMINATHAN
CYRUS
MEHUL PATIL
PRAVEEN U

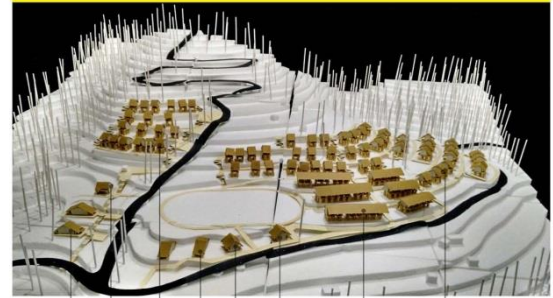
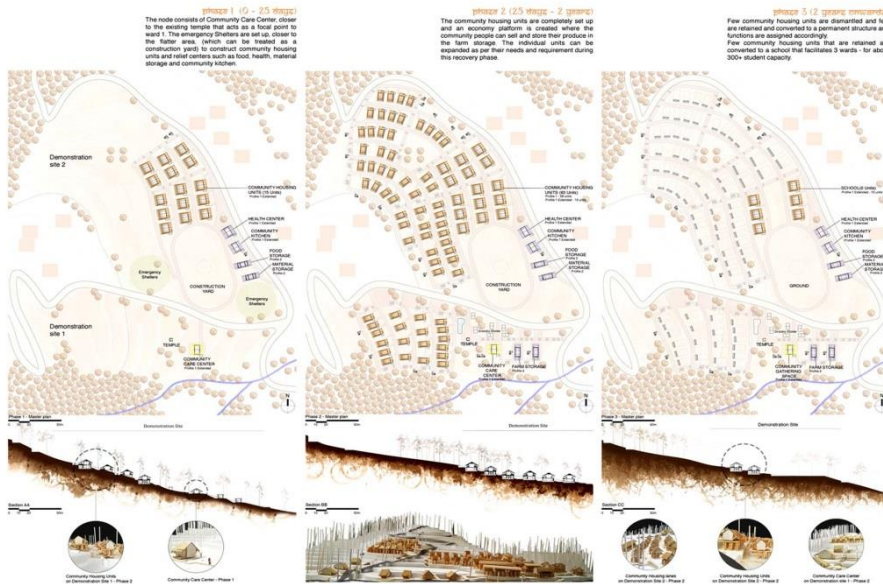
DEEPA MANDREKAR
BIJOY RAMACHANDRAN
SANDEEP JAIN
VATSALA D'CUNHA
RAGHUNANDAN GURURAJ
ANUP NAIK
RABINDRA J VASAVADA
DURGANAND BALSAVAR
BIJU KURIAKOSE
ELIZA
NAGRAJ VASTERE

THESIS 2016

Anusha P in NIASA reg. top 10

Monthly Reviews by ace architects

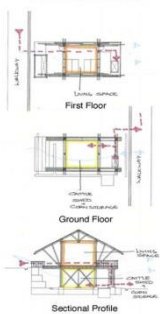
showcase of BMSSA THESIS WORKS



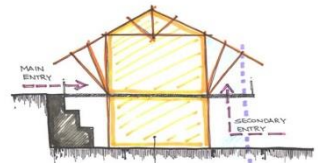
CONSTRUCTION PROCESS



CIRCULATION AND VENTILATION DIAGRAMS



This simple and symmetric profile allows the families to expand to their needs and requirements.



Access Points + Scope of Expansion in the existing housing unit

The failure of the housing units are due to adding additional spaces by punching into the main structure of the housing units. This prototype helps them to extend their housing units according to their needs and requirement.

The Progressive Shelter Celebrating Impermanence Anusha Prakash

Designing a framework to construct a temporary structure quickly, using local materials which is lightweight, durable, renewable and economic - Building houses that involves community engagement also to revive local traditional techniques and creating an opportunity to build a more resilient community.

The proposal focuses on Post- Disaster Rehabilitation which provides a single references for guiding and decision making during the initial 25 days, i.e. disaster recovery period. Providing an opportunity to build a more resilient community. It is an instructed which combines both modern and traditional architecture.

Featuring..



Nandhit Reddy
Mahesh N R



Anusha Prakash
Shashank Shetty



Who's Who of the Industry as Thesis Reviewers



Ar. Soumitro Ghosh



Ar. Akshay Heranjai



Ar. Ruchi Patel



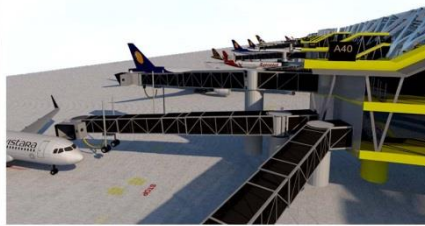
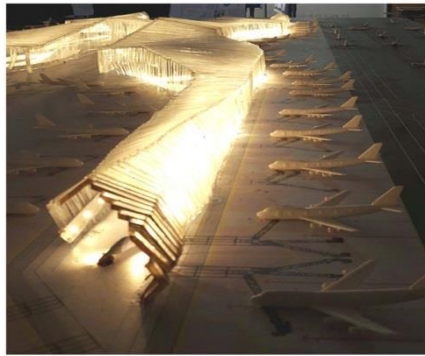
Ar. Arun Swaminathan

THESIS 2016

Terminal Design & Master Planning of Navi Mumbai International Airport
Mahesh N R

This airport is designed to accommodate 60+ million passengers. The design caters to the Master planning of the Airport and Design of the Integrated Airport Terminal.

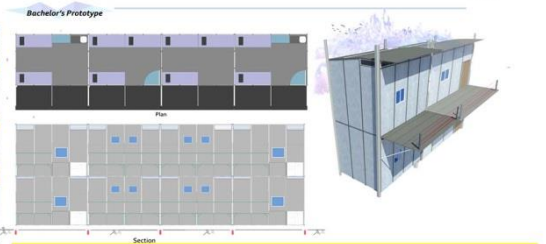
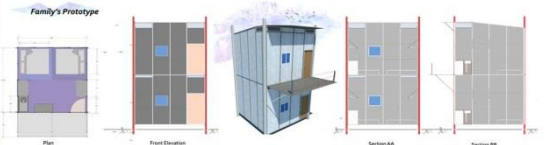
External thesis review by
Ar. Arun Swaminathan in April 2016



Porta-vention

Nandhit Reddy

A portable housing system as an intervention for migratory construction workers of Bangalore
Prototypes of single and double occupant are developed and a layout is proposed at two upcoming apartment sites.



Intervention Site 2 - Empowerment Center



The Swadhar Project

Empowering the citizens of Kamathipura, Red light area

Shashank Shetty

Kamathipura is Mumbai's oldest and Asia's largest red light district. The thesis aims to be an initiative to cater to the needs and issues of the inhabitants of this area through architecture. The built interfaces of this project will cater to its immediate respective contexts and be the catalysts to make this community a less vulnerable lot.



Design Evolution

The street within a street concept.

Initial idea of incorporating the screen as a porous feature.

Production units are designed as interactive and group working type of spaces.

There is drop off and segregation spaces that helps formulate smooth stages for work to be carried out.

The elevated built structures give open shaded spaces on the lower levels that are used as spaces for public use or project favouring spaces.

The use of colour in the building makes a statement. Choice of colour needs to be one that has imagery connect or identify to the idea of the women empowerment and the sex industries.

Sketch showing the idea of the screen in terms of built mass and its inter connectivity.

An attempt has been made to replicate the typology of shops with existing plots used of reuse spaces.

Schematic section showing the grid coming to life with activity and connecting the different blocks.

Proud Sponsors of ANDC 2016

Proud Sponsors of ANDC 2016

Proud Sponsors of ANDC 2016

With Best Compliments from:

With Best Compliments from:

With Best Compliments from:



Photography Corner



Khyati Solanki SEM III

Painting Corner



Rohit Belvikar SEM III

Climbing

Among broken mountains,
Trampled leaves,
After taking the rightsteps,
Towards the wrong face.

A cold air you expected,
The loneliness notso much.
An air so foreign,
That slowly kisses thisland so barren.

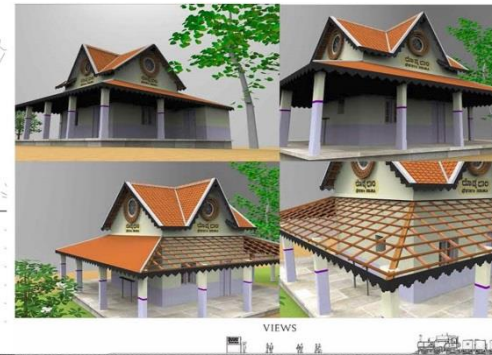
Don't look down at your exhausted feet.
Look around, look up, where the stars and land meet.
Death isn't your destiny.
Love, truth and beauty is.
With the mass of darkness and twinkles above you,
And a mountain of steps beneath you.
What do you have to fear?
From here,
The view will always be clear.

Omar Faroque SEMV

Poetry Corner

BMSSA Institutional Social Responsibility

Heritage Documentation DODJALA Rly Stn



A team of Sem V students (Kolla Arun, Sanskriti Sharma, Vaishak S, Sanjana R), under guidance of Ar. Sharan Desai and Ar. Padmini Rajaram, measured and documented the 100 year old Dodjala Railway Station as a part of the Institutional Social Responsibility initiatives at the School.

Built in the year 1915, Dodjala Railway Station, situated on the North Bangalore City - Chikballapur line, is reminiscent of colonial times. The measure drawings and study sheets were sent to INTACH as an entry for the Heritage Awards for Excellence in Documentation 2016. The School aims to extend this activity and document 6 stations which have been identified. Interested students who would like to get involved in this initiative may get in touch with Ar. Sharan Desai or Ar. Padmini Rajaram.

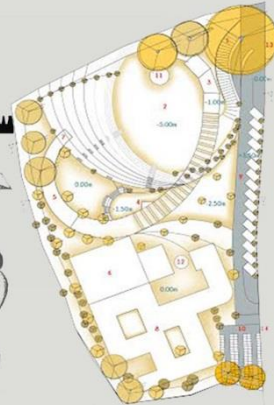
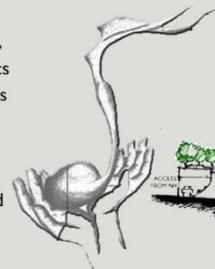


Competition Entry

Reinventing Gwalior 2016

Keran Raja Kumar D, Namratha DV, Omar Faroque participated in a competition organised by SqrFactor India, in association with Gwalior Municipal Corporation, required us to design a School/ Cultural Center for Music and Arts held at Madhav Institute of Technology and Science, Gwalior on 28th and 29 th May 2016.

The rising issue of unpopularity of Indian classical and folk arts by emphasising traditional architectural character. The design principles of Rhythm, texture, proportion, harmony and dynamics are brought alive here through harmonious level changes, dynamic courtyards, traditional arches, living texture walls, and "dual amphitheatre, to name a few. The spaces included studios, lecture rooms and performing art spaces.



MASTER PLAN

SCALE: 1:400

WE HAVE ADDRESSED THE RISING ISSUE OF UNPOPULARITY OF INDIAN CLASSICAL AND FOLK ARTS BY EMPHASISING THE CENTER'S CHARACTER TOWARDS INDIAN ART FORMS.

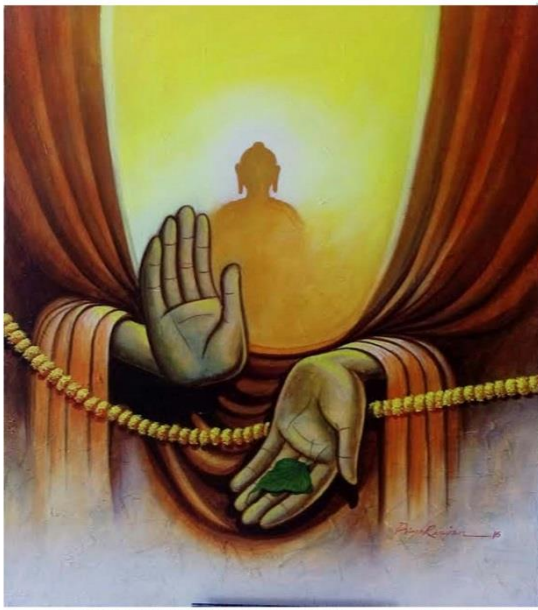
EARTH INSULATED SPACES - STUDENT DINING JALDI PROXIMITY CHANGES ACCORDING TO THE NATURAL LIGHT FALLING ON SOUND PROOFING BY BEAMS OF STONE MASONRY AND PLANTERS

TOGETHER WE GROW WITH MUSIC, ARTS, DANCE & DRAMA

23 STUDIOS
7 INSTRUMENTAL
5 DANCE FLOORS
6 THEATRE
5 DRAPES
12 LECTURE ROOMS



SECTION 4/F



BMSSA Trivia

This Painting by our resident artist **Priyaranjan Behera**, was on display for a week from 11th-16th, in the month of June 2016 at Samanvai art gallery, Jaipur, Rajasthan.

AUG 15 @BMSSA



International Yoga Day @BMSSA

To celebrate International Yoga Day on June 21, 2016, BMSSA arranged for a yoga session in college under the able guidance of Smt Manjula Prasad, who has been an instructor and practitioner of Yoga for the last fifteen years.



HoA through Models

The Sem IV students engaged with Islamic Art, Ornament and Architecture through recreating arabesque, jali, pietra dura and tessellation panels, scaled models of monuments and even costume design.



Student-Teacher tug-of-War



Student Sales Counter

Student Teachers Antakshari

BMSSA Intracollege Fest organised by BMSSA Student Council members was a colorful affair.

A week of afternoon festivities and fun, SPECTRUM 2016 saw enthusiastic participation from students and, as the adjoining pictures show, the faculty alike.

The week culminated in the second BMSSA OPEN DAY.

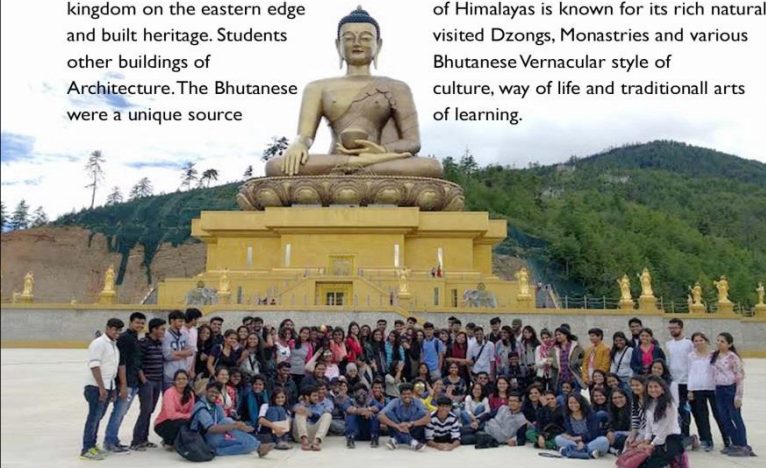
SPECTRUM 2016



BMSSA TRAVELS

Land of the Thunder Dragon:- BHUTAN

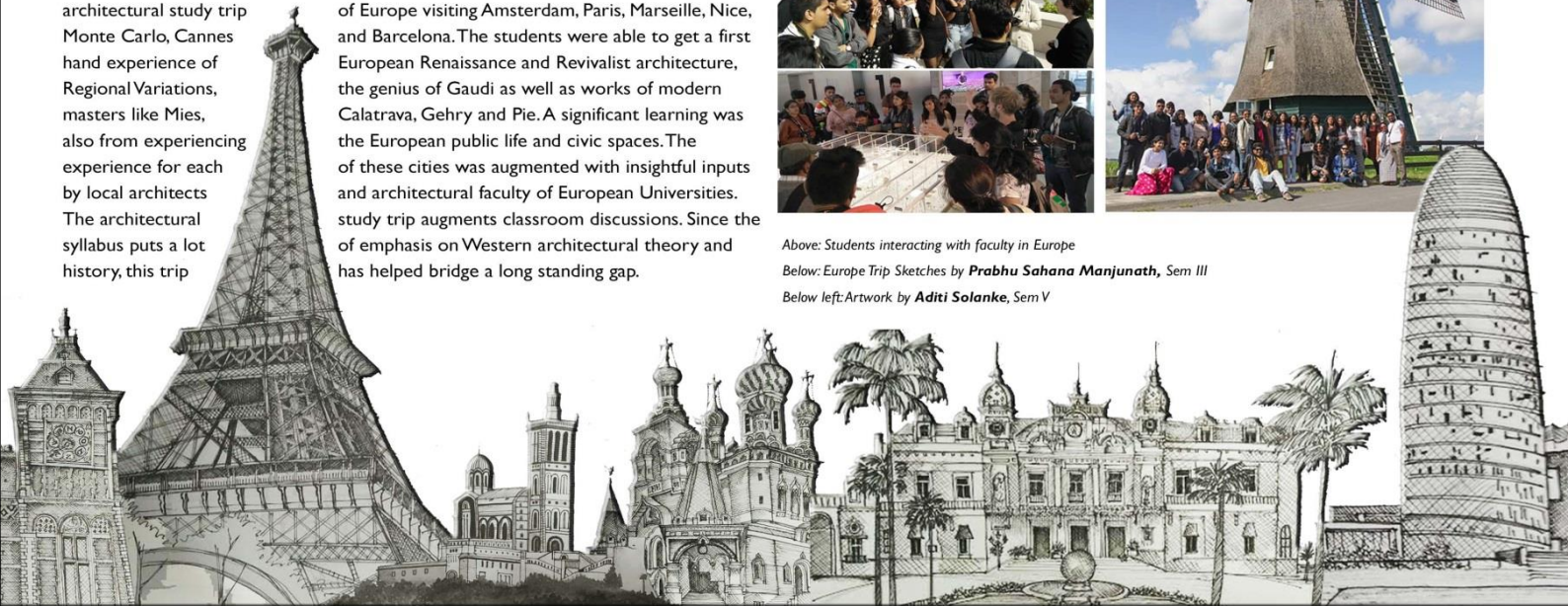
In July, 2016, 110 BMSSA students along with faculty, visited Bhutan- a Buddhist kingdom on the eastern edge of Himalayas is known for its rich natural and built heritage. Students visited Dzongs, Monastries and various other buildings of Bhutanese Vernacular style of Architecture. The Bhutanese culture, way of life and traditional arts were a unique source of learning.



EuroTrip 2016

Amsterdam, Paris, Marseilles, Nice, Barcelona

In July, 2016, BMSSA students of Sem II and Sem IV, accompanied by faculty, went for an architectural study trip of Europe visiting Amsterdam, Paris, Marseille, Nice, Monte Carlo, Cannes and Barcelona. The students were able to get a first hand experience of European Renaissance and Revivalist architecture, the genius of Gaudi as well as works of modern masters like Mies, Calatrava, Gehry and Pie. A significant learning was also from experiencing the European public life and civic spaces. The of these cities was augmented with insightful inputs and architectural faculty of European Universities. The architectural study trip augments classroom discussions. Since the syllabus puts a lot of emphasis on Western architectural theory and history, this trip has helped bridge a long standing gap.



SUBMIT

GET
FEATURED.

GRAPHICS	CARICATURES	SKETCHES
ARTICLES	MODELS	RENDERS
SHEETS	TRAVELOGUES	REVIEWS

Mail us your entries at
Editorial.bmssa@gmail.com



Above: Students interacting with faculty in Europe
Below: Europe Trip Sketches by **Prabhu Sahana Manjunath**, Sem III
Below left: Artwork by **Aditi Solanke**, Sem V

The Team

Student Coordinators

OMAR JAHNAVI

Faculty Coordinators

SHREYASI SRUSHTI

Printing Courtesy

MEDINI
AUTODESK

To,



Write to us:

BMS School of Architecture
Avalahalli, Yelahanka, Bangalore 560064
editorial.bmssa@gmail.com

