

REVERB

A Semester in Review

What's Inside... A closer look at the previous semester-Highlighting our recent achievements, our agendum and what we aspire towards.

Contents

02...
OUTSIDE the School
CONSTRUCTION
WEEK



From the desk of the Director
Dr. Sapna Papu

The release of the fourth issue of 'Reverb' marks the sixth year of inception of the School. While ensuring curricular conformity, we explore innovative 'Teaching-learning' approaches leading towards establishing an Identity to the school. The semester commenced with 'CONSTRUCTORIUM', a 'hands-on' activity across semesters, wherein, students explored and built experimental structures on campus. Further, the students are sensitized to 'creativity' through workshops by an eminent 'Artist in Residency'; introduced to the digital world through workshops by 'Autodesk'; dotted with interactions with the Industry

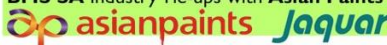
giants, such as the 'Asian Paints', 'Jaquar', and eminent practising Architects, who bring in the latest in the Industry, bridging the gap between academia and the practical world. Featuring our students and faculty achievers who have made their presence felt at various National and International platforms brings us immense pleasure.

We thank our Chairman and Trustees for their unwavering support and trust in our endeavour and finally all our stakeholders, the parents, & students who are shaping this Institution and realising our vision and mission.

Thanks to the editorial team for their sustained momentum in releasing this issue and many more in the future.

03...
GUEST LECTURES
WORKSHOPS

BMS SA Industry Tie-ups with Asian Paints and Jaquar



Details inside...

Line Form Space

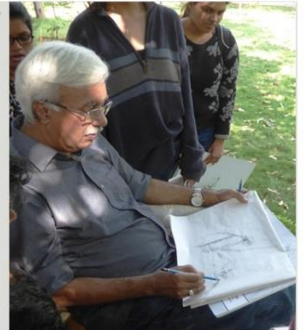
04...
COMPETITION
ENTRIES



New Year Celebrations

BMSSA 'Artist in Residency' A V Ilango

To foster an environment of boundless creativity, eminent artist Ilango (from Ilango's Art Space, Chennai) is now conducting week-long vertical art studios in BMSSA every month. The students have been left spell-bound and inspired.



05...
SEMESTER WORKS



06...
SOCIAL
RESPONSIBILITY
VENTURES



BAHAI FDP A Bahai Academy, Panchgani - BMS SA collaboration

An invigorating experience was in store for all the academicians who participated in the **Faculty Development Program** on Moral Capabilities- Fostering Personal Development and Social Progress, hosted by the BMS School of Architecture, Yelahanka, under the aegis of the BMS Educational Trust, from 1st to 5th March, 2016. Inaugurated by **Sri. K Jairaj, IAS (Retd.)**, the program aimed to instil Universal Human Values through interactive activities on Moral Frameworks, Cooperative Learning structures etc. Recognising the present need to equip faculty with mentorship skills, Dr.Sapna Papu, Director, BMSSA, had collaborated with and invited reputed counsellors from the esteemed **Bahai Academy, Panchgani- Lesan Azadi (Director) and Shashikala G Gaikwad (Asst Director, Research)**- to conduct the above workshop which was open for registration to all interested faculty in Bangalore. Widely attended, the workshop stimulated the participants to empathetically rethink their day-to-day approach in dealing with today's youth and their crisis situations.

07...
VISION MISSION
TRIVIA
ART

08...
ART



(P-6, F-7):
Dr. P. Dayananda Pai, Dr. B.S. Ragini Narayan, Ar. Jaishim K Rao, Sri. K. Jairaj, Dr.Sapna Papu, Dr. Mohan Babu G N on New Year's Eve at BMSSA;
Sri. A.V. Ilango interacting with students;
FDP inauguration ceremony;
BAHAI FDP in session.

BMSSA Calender 2016 Published

AutoDesk- Medini Nodal Centre

New Girls' Hostel for BMS

OUTSIDE THE SCHOOL

Dr. Sapna Papu, Director along with Prof. Harsha. M. S attended the **Top Level Management Development Program** for BMS Senior Staff, held at BMSCE

Dr. Sapna Papu, Director, BMSSA & Prof. Mondira Ganguly were nominated to attend a workshop organized by COA on '**COA Minimum Standards and Online Institution Management System – 2015**'.

Our student **Maunashree B J** (SEM I) did us all proud with her award winning essay in the college-level competition organized by the Forest Department, Government of Karnataka as a part of the '61st Wildlife Week 2015'.



Maunashree B J also won the second prize in **Drawing and Face Painting competition** held by **Deccan Herald** at Bangalore Chitra Santhe in Jan 2016.

Core faculty of BMSSA is actively encouraged to pursue research.

Asst Prof and Artist **Chandan Kashyap** has published a research paper Rethinking 'Mad after veena' in the prestigious **International Journal of Social Science and Humanities Research** in which he analyses the complexity of iconographic cluster of the famous painting, 'Mad after Veena' by K.Venkatappa.

BMSSA has recently funded core faculty members to present papers at the **International Conference on Changing Cities** at NIT Thrissur.

Asso Prof **Seema Naveen's** research was on Investigating the role of PES in reviving the social and ecological fabric of Kodagu and Asst Prof **Shreyasi Pal** wrote on Politics of Urbanscape: Transfiguring the Image of Kolkata.

BMSSA CONSTRUCTION WEEK

CONSTRUCTORIUM 2016



Constructorium - the BMSSA Construction Yard Week from 1st to 5th Feb '16 saw five simultaneous construction types being demonstrated:
 RCC Structures
 Bricks and Jaali
 Steel Structures
 Prototypes
 Ferrocement

The construction yard activities was coordinated by Asst Prof Anjan, Deepak and Shreyas. This is in continuation of on going efforts to bring hands-on experience in the classroom.

NASA Achievements

BMSSA students participated and won accolades (dance trophy and photography) in the Zonal NASA convention held in October 2015 at Srinivas School of Architecture, Mangalore. Congratulations to the team!



NASA 2016

BMS SA makes its presence felt in the National convention as well!!

BMSSA students attended the ANNUAL NASA 2016 held at GCPIA, Surat in Feb '16 and were recognised for :

- ANDC** (Citation)
- WRITING ARCHITECTURE** (Special Mention)
- HUDCO entry featured in the TOP 10 list.



BMSSA Research Centre

Bamboo as a Building Material

As a part of collaborative research activities of the research wing of BMSSA-**Centre for Innovation and Design Management**- an afternoon of intensive discussions on innovative bamboo construction was organized.

Dr. Jagadish Vengala, Associate Professor, Dept. of Civil Engg, BMSIT&M, presented an informative lecture on bamboo construction which was followed by a discussion chaired by Dr. Sapna Papu, Director, BMSSA and Dr. Aravind.H.Bhashyam, Professor & HoD, BMSIT&M.



Jaquar Workshop @BMSSA

Jaquar conducted a two day intensive workshop on 'Overview to Complete Bathing Solutions' for SEM IV students of BMSSA which included a visit to the Jaquar Experience Centre at Tasker Town.



CIDM

BMSSA LECTURE SERIES

BMSSA Industry Tie-Ups

AUGUST 2015 - FEBRUARY 2016

WORKSHOPS & GUEST LECTURES

Throughout the month of Sep 2016, various notable academics like **Dr. Anantha Krishna** and **Ar Ranjit Rajan** presented illuminating talks on various facets of Architectural UG Thesis to Sem VII students.

To encourage peer-learning in the School, our final year student **Siddhartha Valluri**, was encouraged to showcase his much appreciated talents at graphics softwares and he conducted a Digital Sketching and Advanced Photoshop Workshop in Oct '16.

Eminent Architect **Chitra Vishwanath** from **BIOME** conducted an intensive discussion session on Climatology in Architecture to supplement the SEMV design studio which dealt with projects in extreme climate conditions.

Ar. **S.V. Ravindra** presented a lecture on Professional Practice of architecture in Sep '16.

Mr. **Nirmal Ram** of Cerebration Consultants presented a guest lecture on HVAC to Sem IV students.

Dr. Binumol Tom, Professor from RIT, Kottayam briefed BMSSA Ph. D students on the topic "Orientation to research in Architecture".

The construction of **Modular Partitions** were demonstrated by Industry Experts HNI- DP Ergo for Sem VII students.

Communication Skills workshop was conducted by experts from IU Training to help SEM I students.

Coordinated by core faculty (Asst Professors Anjan, Shreyas, Shrigowri, Priyaranjan and Chandan), the **Basic Design workshop Beyond Creativity** conducted by BMSSA explored creativity through the use of scrap materials like metal, plastic and paper. This is in keeping with ongoing Institutional efforts to promote sensitive designs.

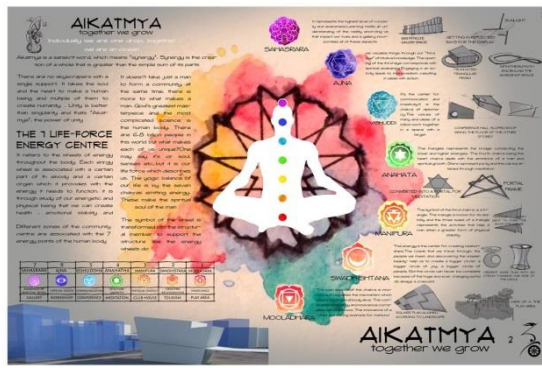
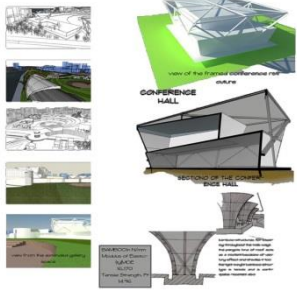


Asian Paints Workshop @BMSSA

Asian Paints conducted a hands-on workshop with the students of BMSSA through **Mr. Ajay Subramaniam**- a industry interaction with the market leaders which allowed a window for students to understand the market trends, new launches, line-up on the R&D front along with curriculum study.

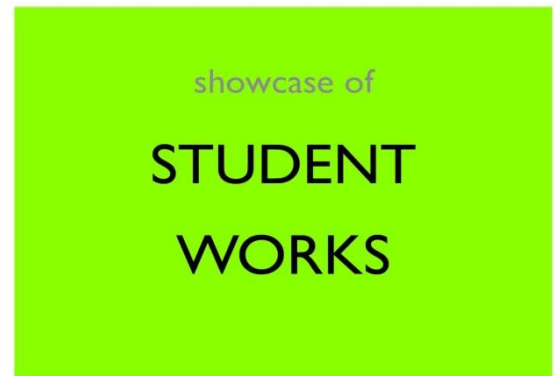


Pragyan '16



BMSSA team receives Third prize

The design team of Sem IV students **Keran, Ruhani and Priya** participated and won third prize for their project 'AIKATMYA- together we grow' at PRAGYAN 2016 held at NIT Trichy.

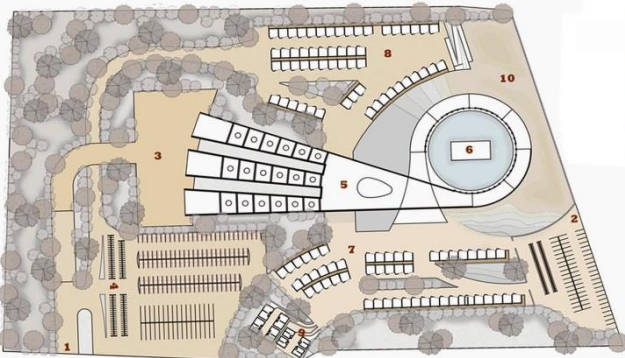


A congregation space to address incapacitance.

The design team perceived incapacitance as social trauma in Ayodhya and economic disparity caused by regional politics (Babri masjid issue). The approach emphasized the concept of salvation preached by all religions (*moksha, nirvana and sufism*) over the triviality of land dispute- **a monument dedicated to people of all walks of life.** It tries to resolve religious differences and empower the economically incapacitated.

ANDC Citation

DESIGN DEVELOPMENT



SITE PLAN

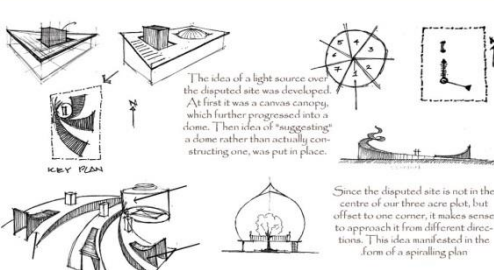
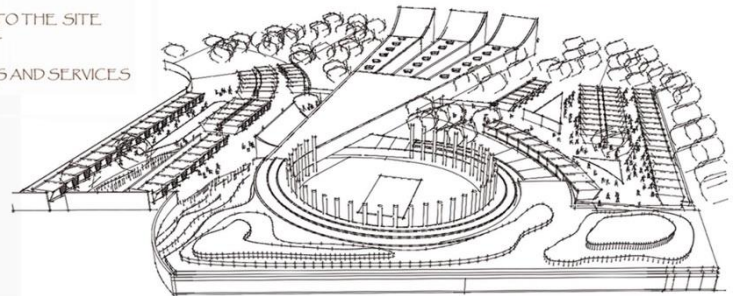
- 1- MAIN SITE ENTRY
- 2- SUBSIDIARY ENTRY TO THE MARKET
- 3- TERRACE
- 4- PARKING
- 5- APPROACH TO THE SITE
- 6- BODHI TREE
- 7- MARKET
- 8- MARKET
- 9- RESTROOMS AND SERVICES
- 10- VIEWPOINT



BMSSA ANDC TEAM 2016

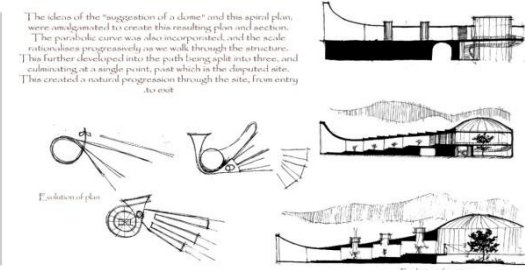
V C Abishek, Shasank, Paromita, Bhargav, Prateek, Akshar, Omar, Sanskriti

AERIAL VIEW



The idea of a light source over the disputed site was developed. At first it was a canvas canopy, which further progressed into a dome. Then idea of "suggesting" a dome rather than actually constructing one, was put in place.

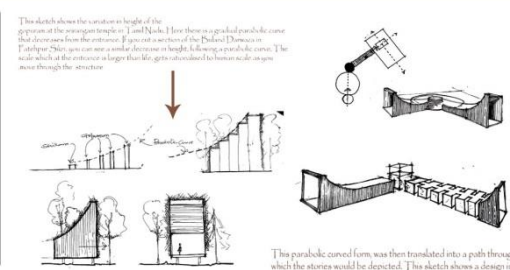
Since the disputed site is not in the centre of our three acre plot, but off to one corner, it makes sense to approach it from different directions. This idea manifested in the form of a spiraling plan.



The ideas of the "suggestion of a dome" and this spiral plan, were amalgamated to create this resulting plan and sections. The parabolic curve was also incorporated, and the scale of the structure progressively as we walk through the structure. This further developed into the path being split into three, and culminating at a single point, post which in the disputed site. This created a natural progression through the site, from entry to exit.

Evolution of plan

Evolution of section



This sketch shows the variation in height of the structure at the entrance to the site. The parabolic curve that decreases from the entrance. If you cut a section of the Parabolic Dome in a vertical plane, you can see a similar decrease in height following a parabolic curve. The wide sketch at the entrance is larger than the sketch at the end of the structure.

This parabolic curved form was then translated into a path through which the structure would be depicted. This sketch shows a design in which the structure has been split into two, with a central focal point.



NASA sets a platform for inter college interaction, showcasing best talent, giving a lot of exposure, sessions of practical learning. Students could hear from leading professionals across the globe and participate in workshops offering the best of local and global practices in architecture.



Pemmasani Harshitha
Unit Secretary



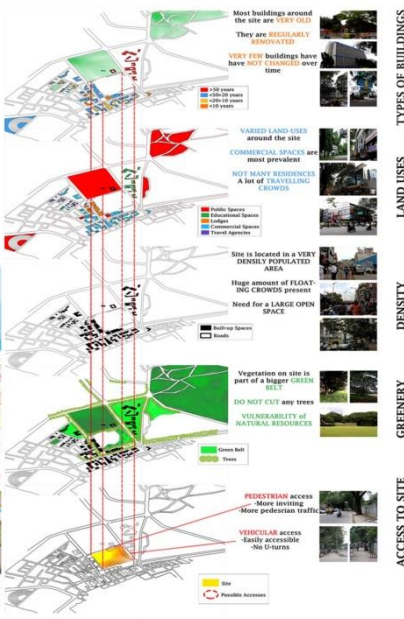
Participating in the various competitions allowed us to learn beyond the curriculum and also in groups of students spread across various semesters. No doubt, this brought about disagreements along with discussions; but it also helped learning how to work together and brought about a sense of bonding. I have been privileged to learn and make the most of it.

WORKSHOPS attended at NASA

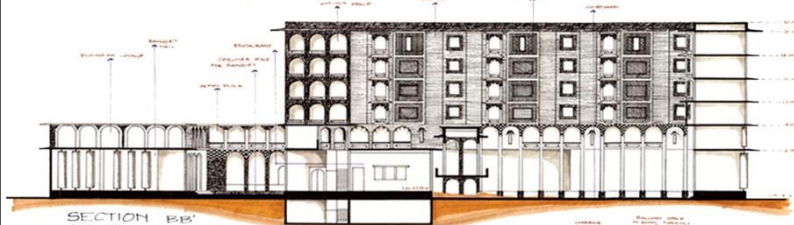
AD Studio

CC Hub at Bangalore Prajna Aigal

Reinventing outdoor shopping spaces keeping in mind the cultural aspects of the city.

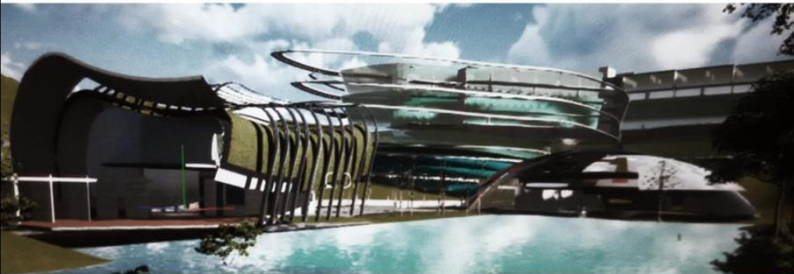


Tourist Hub at Jaisalmer Pratik Nandy



Tourist Hub at SriLanka Kaustubh Kulkarni

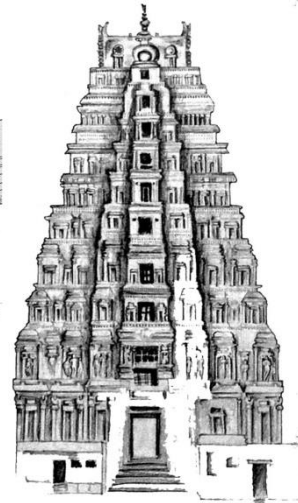
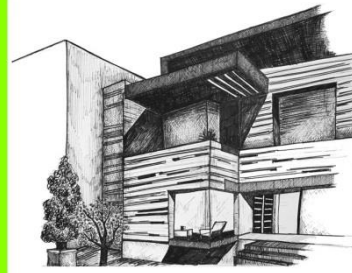
The visitor's centre as a deconstructed stupa was to represent the island of Sri Lanka. Fluid designs applied on the bus stop and hotel were to represent the island country in an architectural form.



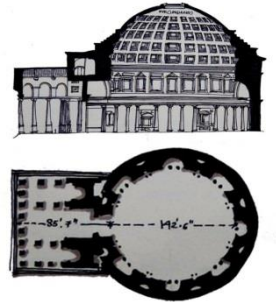
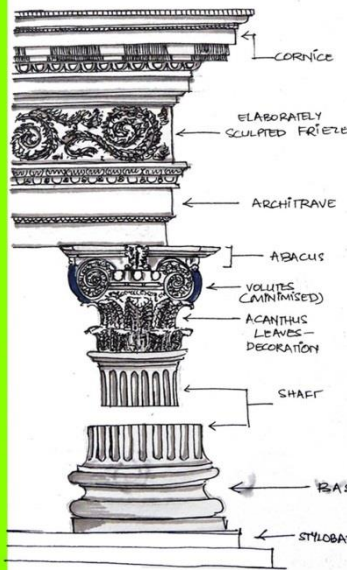
The visitor's centre and hotel was a challenging design brief where students had to respond to climatic and socio-cultural context of Jaisalmer and Sri Lanka, both visited in their annual study trips.

VII Semester CC Hub
V Semester Tourist Hub

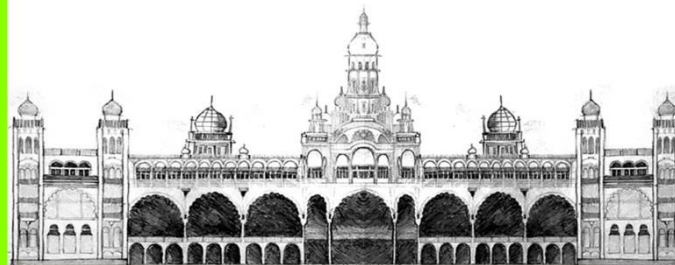
HoA



History through Sketches



Understanding different historical styles of architecture through sketches and using different rendering styles-by Maunashree, Sanjana, Chaitra, Ananth, Sanjana Radhakrishnan.



Revamped Studios @BMSSA

The first semester studios are revamped with full length soft board panelling for display of student works.



Featuring...



PRATIK



KERAN



PRIYA



SANJANA



PRAJNA AIGAL



RUHANI



MAUNA

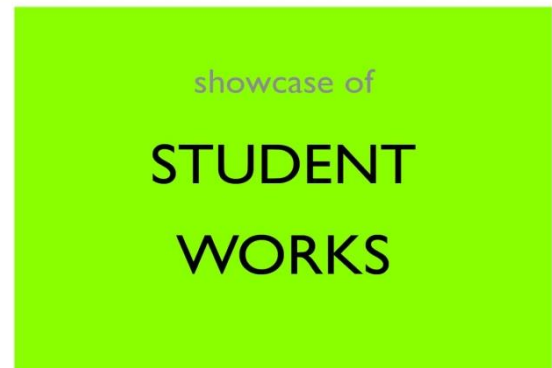
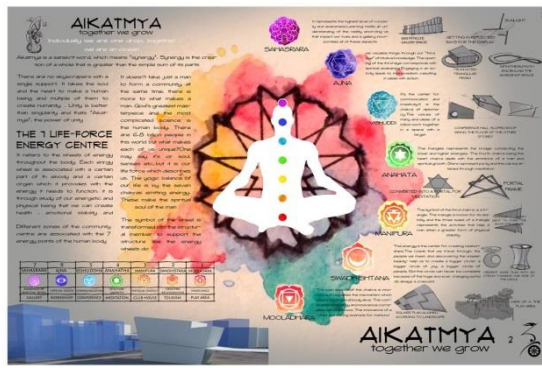
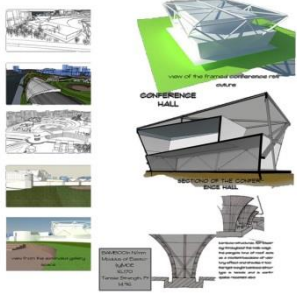


KAUSTUBH



ANANTH

Pragyan '16



BMSSA team receives Third prize

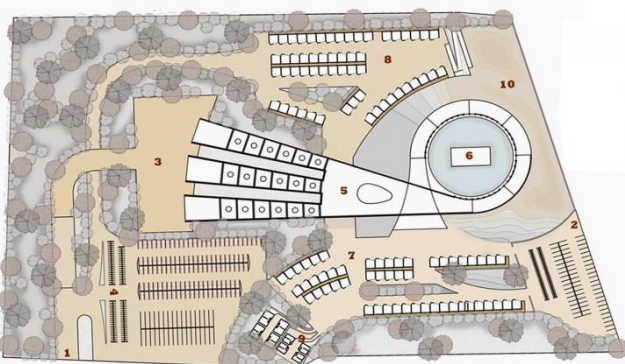
The design team of Sem IV students Keran, Ruhani and Priya participated and won third prize for their project 'AIKATMYA- together we grow' at PRAGYAN 2016 held at NIT Trichy.

A congregation space to address incapacitance.

The design team perceived incapacitance as social trauma in Ayodhya and economic disparity caused by regional politics (Babri masjid issue). The approach emphasized the concept of salvation preached by all religions (*moksha, nirvana and sufism*) over the triviality of land dispute- **a monument dedicated to people of all walks of life.** It tries to resolve religious differences and empower the economically incapacitated.

ANDC Citation

DESIGN DEVELOPMENT

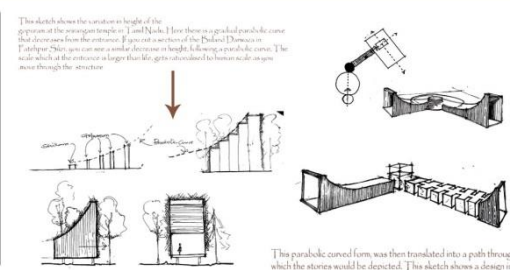
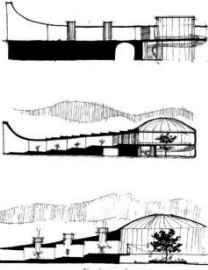
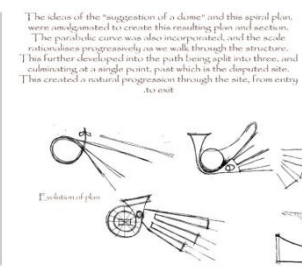
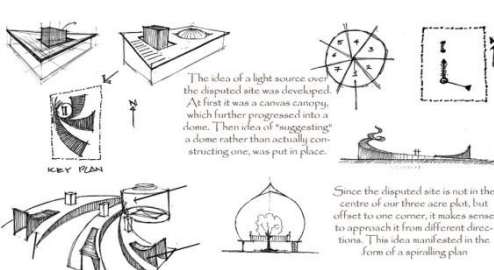
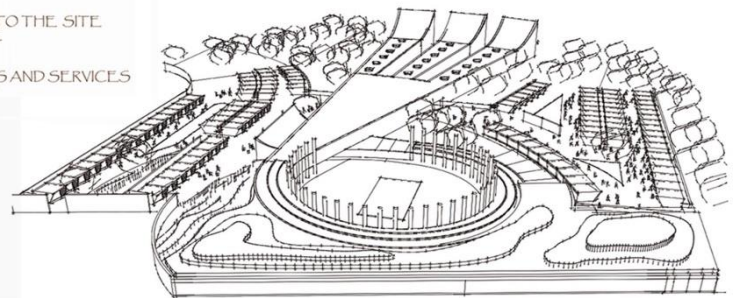


SITE PLAN

- 1- MAIN SITE ENTRY
- 2- SUBSIDIARY ENTRY TO THE MARKET
- 3- TERRACE
- 4- PARKING
- 5- APPROACH TO THE SITE
- 6- BODHI TREE
- 7- MARKET
- 8- MARKET
- 9- RESTROOMS AND SERVICES
- 10- VIEWPOINT



AERIAL VIEW



NASA sets a platform for inter college interaction, showcasing best talent, giving a lot of exposure, sessions of practical learning. Students could hear from leading professionals across the globe and participate in workshops offering the best of local and global practices in architecture.



Pemmasani Harshitha
Unit Secretary



Participating in the various competitions allowed us to learn beyond the curriculum and also in groups of students spread across various semesters. No doubt, this brought about disagreements along with discussions; but it also helped learning how to work together and brought about a sense of bonding. I have been privileged to learn and make the most of it.

WORKSHOPS attended at NASA

The first BMSSA calendar, published in Jan 2016 featured artwork and models of First semester students to recognise their efforts and to make them welcome to the BMSSA family. Coordinated by Asst Prof Chandan Kashyap and Priyaranjan Behera, the calendar featured:

- | | |
|----------------|-------------|
| Farooq A | Ananth S |
| Sumaiya Sahana | Spoorthi |
| Mauna Shree | Sahana M P |
| Edel Andrea | Savitha B |
| U Chaithanya | Mahak Gupta |



Anush in action at the Paintball WCA 2014-15.

BMSSA initiates accreditation process



NAAC

To accelerate realization of our Institutional Vision and Mission statements, BMSSA seeks expert consultation from Dr Ravindra Deshmukh on accreditation.

MISSION

The School of Architecture is dedicated to educating future generations of ethical professionals, creative designers and informed citizens.

VISION

The Vision of the School is to build a world-class research and an educational Institution encouraging innovations and providing services for sustainable built environment and architecture.



Rohit Belvikar of SEM II was adjudged a Golden artist in the international online Painting competition Picasso Art Contest season 4.

Also, he got recognition in the Drawing and Face painting competition held by Deccan Herald at the Bangalore Chitra Santhe, CKP

Archumen 2015

Shashank Sekhar and **Vijeyata Ojha**, Sem VI made an impressive mark in ARCHUMEN Architecture Quiz by entering the Zonal finals in 2015.

Phillumeny



It is probably a hobby you have not heard of! **Asst Prof Deepak Bharadwaj** is an avid phillumenist, and collects matchboxes, matchbox labels and soon hopes to build up an impressive collection. Cheap and disposable, matchbox graphics effortlessly capture the heterogenous and hybrid visual culture of modern India.

Ethnic Day 2015



With Best Compliments from

SRI MAHALAKSHMI ENTERPRISES

Civil Contractor & Real Estate

M.Venkatesh

98, 10 th Main,
Attur Layout,
Yelahanka
Bangalore- 560 064

Mob : 9845372866.

NULINE OFFICE SYSTEM

Manufacturers of all kinds of Furniture

No 20
Behind Janatha colony
Near BM Valley School,
Mysore road
Bangalore-560 039

Ph: 32429790



SCOTCHTAPE continues to win hearts!!

Nupur, Rohann and Nandhit have been performing to live audiences across Bangalore and have won over a lot of fans. All the best to them!



The Team

Student Coordinators

JAHNAVI BINDU

Faculty Coordinators

SHREYASI SRUSHTI KSHIPRA

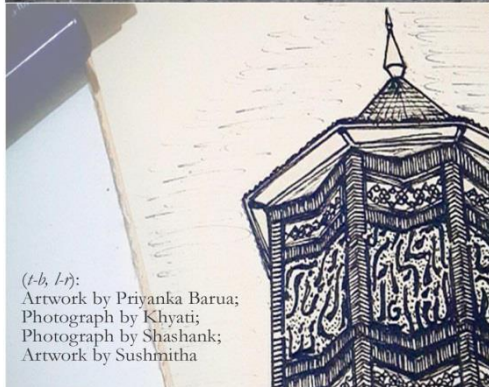
SUBMIT

GET FEATURED.

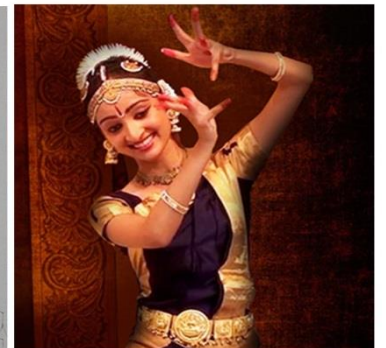
GRAPHICS	CARICATURES	SKETCHES
ARTICLES	MODELS	RENDERS
SHEETS	TRAVELOGUES	REVIEWS

Mail us your entries at

Editorial.bmssa@gmail.com



(t-b, l-r):
Artwork by Priyanka Barua;
Photograph by Khyati;
Photograph by Shashank;
Artwork by Sushmitha



Mayuri Karanth of Sem VI is our young Bharatnatyam exponent. She has to her credit more than 150 performances in dance as a solo and as a part of Natyalahari, Dance institute. Recently she has performed at the Sai Nrityotsava dance festival in Bangalore, Alvas Nudisiri Dance festival in Mangalore and Natyanjali Dance festival at Hosur.

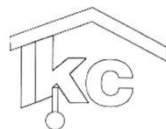
BMSSA AUTODESK collaboration

A Success Story continued...

As a part of our award-winning collaboration, coordinated by our core faculty Ar. Prasad Rotti, BMSSA and MEDINI- an authorised Autodesk training platform, together, have developed new pedagogy for teaching software. The response and results have been remarkable because market-driven certification is required for both recognizing excellence and catalyzing professional development.

In addition to regular certification courses an innovative workshop- **Diagrams in Architecture**- was conducted in Jan '16. The design workshop aimed to train students to generate diagrams through software to help them bridge the gap between thoughts and drawings.

Best Compliments from



KARNATAKA CONSTRUCTIONS



To,



Write to us:

BMS School of Architecture
Avalahalli, Yelahanka, Bangalore 560064
editorial.bmssa@gmail.com